



# SANCTUARY™

SLIDING PATIO DOOR  
COLLECTION

A PREMIER CHOICE FOR YOUR HOME  
*A Premier Choice*

Proudly offered by:

**Window Universe**  
*www.TheFutureofReplacementWindows.com*

 **GENTEK®**

CLASSIC | CONTEMPORARY | FRENCH

## OUR PATIO DOORS. YOUR PEACE OF MIND.

Visually exciting and powerfully built, Gentek patio doors will dramatically heighten the style and comfort of your home. Equally important, they will deliver true peace of mind that you have chosen a high-performance door from a respected manufacturer. Pride in our products and American craftsmanship are at the heart of our commitment to quality. It's what makes our doors among the best in the industry and our service second to none.



Gentek patio doors are precision-built and backed by decades of manufacturing expertise. Engineering, innovation, rigorous testing and stringent quality control are just a few ways that we turn cutting-edge technology into superior products and satisfied customers. When you choose a Gentek patio door for your home, you can be assured of the highest levels of performance, beauty and value.



# SANCTUARY™

SLIDING PATIO DOOR  
COLLECTION

Our Sanctuary sliding patio door captures the essence of superb craftsmanship in three distinctive styles: Contemporary, Classic and French. Each door in this handsome collection masterfully pairs artistic detail with a powerfully protective construction for unmatched quality and performance. You'll also appreciate the infusion of natural sunlight and the ambiance of an expanded living area offered by this exceptional patio door.

## SUPERIOR DESIGN AND CONSTRUCTION

Expertly crafted with a premium vinyl construction, energy-efficient insulating components and high-performance glass, Sanctuary presents the pinnacle of design excellence. The heavy-duty mainframe and sash, multi-chambered extrusions and steel-reinforced interlocking meeting rails provide superior structural integrity and durability, as well as insulating performance. Dual internal/external weatherstripping, compression bulb seal, closed-cell foam gaskets and a 1" thick insulated glass unit with a warm-edge spacer system also contribute to the thermal efficiency.

Smooth gliding action is assured with a precision-engineered tandem roller system. The sleek yet rugged aluminum screen also features four adjustable rollers for easy and reliable operation year after year.

## GET THE BARRIERXP® ADVANTAGE\*

You might think of glass as being fragile, yet it's one of the most powerful elements in achieving outstanding thermal efficiency. Upgrading your Sanctuary patio door with one of our BarrierXP insulating glass packages can further promote energy conservation year-round. BarrierXP combines multi-layer low-emissivity (Low-E) glass and argon gas along with the Intercept® Warm-Edge Spacer System to fortify the energy efficiency of the glass unit.

Low-E glass features a virtually clear, metallic coating that acts as a thermal mirror, reflecting radiant heat back into your home during winter and reducing unwanted solar energy in the summer.

## HIGH-PERFORMANCE SPACER SYSTEM

The spacer system in your patio door not only stabilizes the panes of glass, it also helps prevent the transfer of heat and cold. Sanctuary patio doors feature the Intercept Warm-Edge Spacer, a unique, one-piece metal alloy U-channel design that reduces heat loss through the patio door. It's stronger and better at retaining insulating gas than many conventional spacer systems.

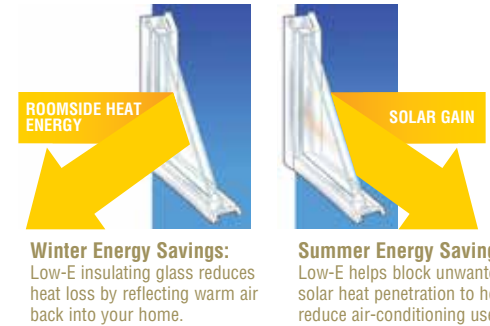


## COMPARE THE ENERGY-SAVING GLASS TECHNOLOGY

BarrierXP insulated glass packages have proven to be far more effective than ordinary clear glass units. A simple way to compare one patio door to the next is to check out the performance data on the door's glass label. The lower the U-factor, the less energy you'll need to heat your home. The lower the Solar Heat Gain Coefficient (SHGC), the more you'll conserve on air-conditioning.

## GREENER AND CLEANER CHOICES

Did you know Gentek patio doors are eco-friendly in several ways? Every door is meticulously built to provide energy efficiency and help reduce the consumption of fossil fuels for heating and homes. They also boast a long service life and are produced with manufacturing efficiencies designed to minimize waste during production. As a recyclable material, in-plant vinyl scrap can be reused for other products, further reducing the volume and environmental impact of waste.



Gentek offers a variety of ENERGY STAR® qualified patio doors. Consult your Sales Representative for the optimal glass package required for your home and climate zone.

## CONTEMPORARY-STYLE SLIDING PATIO DOOR

CLEAN-LINE DESIGN WITH 3" RAILS

Our Contemporary sliding patio door will adorn your home with the perfect measure of modern practicality. Sleek and symmetrical 3" rails frame the generous glass area, while a heavy-duty infrastructure delivers exceptional strength and durability.



## BUILT WEATHER-TOUGH!

Take a closer look at Sanctuary's superior design and weathertight construction. This premium patio door will transform your interior with the beauty of natural sunlight while protecting your home from energy loss.

- 1 Premium vinyl mainframe and sash extrusions are colored throughout – won't chip, peel, crack or warp and never need to be painted.
- 2 Mainframe and sash feature a double-wall design and multi-chambered construction for outstanding strength and thermal protection.
- 3 Dual internal/external weatherstripping on the sash enhances energy efficiency and performance.
- 4 Symmetrical 3" sash rails with mitered and fusion-welded joints provide aesthetic appeal as well as added strength and durability.
- 5 1" thick insulated glass unit with the Intercept Warm-Edge Spacer System promotes energy conservation year-round.
- 6 Steel reinforcements at the interlocks and lock rails deliver increased strength, rigidity and structural integrity.
- 7 Contoured glazing bead adds visual interest and beauty.
- 8 Precision-engineered tandem roller system ensures quiet and easy operation of the door panel.
- 9 Mainframe joints incorporate closed-cell foam gaskets for superior sealing.

## ADDITIONAL FEATURES

- Sturdy and durable knock down frame for convenient job site installation.
- Deep interlocks with a protective bulb weatherstrip deliver increased insulation and a tight seal.
- Mainframe includes interior and exterior accessory grooves for installation and design versatility.
- Multi-point locking system with strong steel hook design seals the door tightly closed and helps to prevent energy loss.
- Interlock incorporates a built-in, anti-lift feature to impede door panel removal when the door is closed or locked.
- Stainless steel roller track eliminates the possibility of unsightly dark residue and wearing typical of aluminum tracks.
- Heavy-duty extruded aluminum screen features four adjustable rollers for smooth gliding.
- Available in a 2-panel style in 5', 6', 8' and Wisconsin-style widths; 3-panel styles in 9' and 12' widths; and a 4-panel style in a 12' width with center panels that open to each side.
- Choose a White, Beige or Classic Clay door with left or right moving panel – left moving panel is standard (outside looking in); not field reversible.
- Exterior colors and interior woodgrain finish options also are offered.
- Backed by a Lifetime Limited Warranty.†

## SLIDING PATIO DOOR OPTIONS

- ENERGY STAR qualified BarrierXP insulated glass package options.
- Tandem rollers available with stainless steel housing and bearings for harsh environments.
- Interior ventilation foot lock allows convenient yet limited opening of the door for airflow.
- Keyed exterior lock offers convenient access from outside the home.
- Decorative grids or V-grooved cut glass patterns for enhanced beauty.

### Contemporary-Style Patio Door Glass Performance Comparison\*\*

	U-Factor	SHGC
Clear	0.43	0.56
BarrierXP	0.27	0.29
BarrierXP ThermD	0.27	0.29
BarrierXPsc	0.27	0.20
BarrierXP TG2	0.20	0.26

\*\*6400 whole door values.

### Glass Package Terminology

**Clear:** Double-paned clear glass unit.

**BarrierXP:** Double-paned unit with one pane of Low-E glass, argon gas and standard Intercept spacer.

**BarrierXP ThermD:** Double-paned unit with one pane of Low-E glass, argon gas and Stainless Steel Intercept spacer.

**BarrierXPsc:** Double-paned unit with one pane of Low-E SHGC glass, argon gas and standard Intercept spacer.

**BarrierXP TG2:** Triple-paned unit with two panes of Low-E glass, two air spaces of argon gas and standard Intercept spacer.

## CLASSIC-STYLE SLIDING PATIO DOOR

TRADITIONAL BEAUTY WITH 5" RAILS

Warm and welcoming with a hint of stately charm perfectly describes our Classic sliding patio door. Ample 5" rails and a clean-line design effortlessly merge with a heavy-duty construction for the ideal combination of elegance and strength.



## ENDURING BEAUTY AND PERFORMANCE

The reliably smooth and quiet gliding of our Sanctuary patio door is a simple pleasure you're certain to enjoy year after year, along with the weathertight seal and energy-efficient features.

- 1 Premium vinyl mainframe and sash extrusions are colored throughout – won't chip, peel, crack or warp and never need to be painted.
- 2 Mainframe and sash feature a double-wall design and multi-chambered construction for outstanding strength and thermal protection.
- 3 Dual internal/external weatherstripping on the sash enhances energy efficiency and performance.
- 4 Ample 5" sash rails with mitered and fusion-welded joints provide traditional beauty as well as added strength and durability.
- 5 1" thick insulated glass unit with the Intercept Warm-Edge Spacer System promotes energy conservation year-round.
- 6 Steel reinforcements at the interlocks and lock rails deliver increased strength, rigidity and structural integrity.
- 7 Contoured glazing bead adds visual interest and beauty.
- 8 Precision-engineered tandem roller system ensures quiet and easy operation of the door panel.
- 9 Mainframe joints incorporate closed-cell foam gaskets for superior sealing.

## ADDITIONAL FEATURES

- Sturdy and durable knock down frame for convenient job site installation.
- Deep interlocks with a protective bulb weatherstrip deliver increased insulation and a tight seal.
- Mainframe includes interior and exterior accessory grooves for installation and design versatility.
- Multi-point locking system with strong steel hook design seals the door tightly closed and helps to prevent energy loss.
- Interlock incorporates a built-in, anti-lift feature to impede door panel removal when the door is closed or locked.
- Stainless steel roller track eliminates the possibility of unsightly dark residue and wearing typical of aluminum tracks.
- Heavy-duty extruded aluminum screen features four adjustable rollers for smooth gliding.
- Available in a 2-panel style in 5', 6', 8' and Wisconsin-style widths; 3-panel styles in 9' and 12' widths; and a 4-panel style in a 12' width with center panels that open to each side.
- Choose a White, Beige or Classic Clay door with left or right moving panel – left moving panel is standard (outside looking in); not field reversible.
- Exterior colors and interior woodgrain finish options also are offered.
- Backed by a Lifetime Limited Warranty.†

## SLIDING PATIO DOOR OPTIONS

- ENERGY STAR qualified BarrierXP insulated glass package options.
- Tandem rollers available with stainless steel housing and bearings for harsh environments.
- Interior ventilation foot lock allows convenient yet limited opening of the door for airflow.
- Keyed exterior lock offers convenient access from outside the home.
- Decorative grids or V-grooved cut glass patterns for enhanced beauty.

### Classic-Style Sliding Patio Door Glass Performance Comparison\*\*

	U-Factor	SHGC
Clear	0.41	0.49
BarrierXP	0.27	0.26
BarrierXP ThermD	0.27	0.26
BarrierXPsc	0.27	0.18
BarrierXP TG2	0.21	0.22

\*\*6400 whole door values.

### Glass Package Terminology

**Clear:** Double-paned clear glass unit.

**BarrierXP:** Double-paned unit with one pane of Low-E glass, argon gas and standard Intercept spacer.

**BarrierXP ThermD:** Double-paned unit with one pane of Low-E glass, argon gas and Stainless Steel Intercept spacer.

**BarrierXPsc:** Double-paned unit with one pane of Low-E SHGC glass, argon gas and standard Intercept spacer.

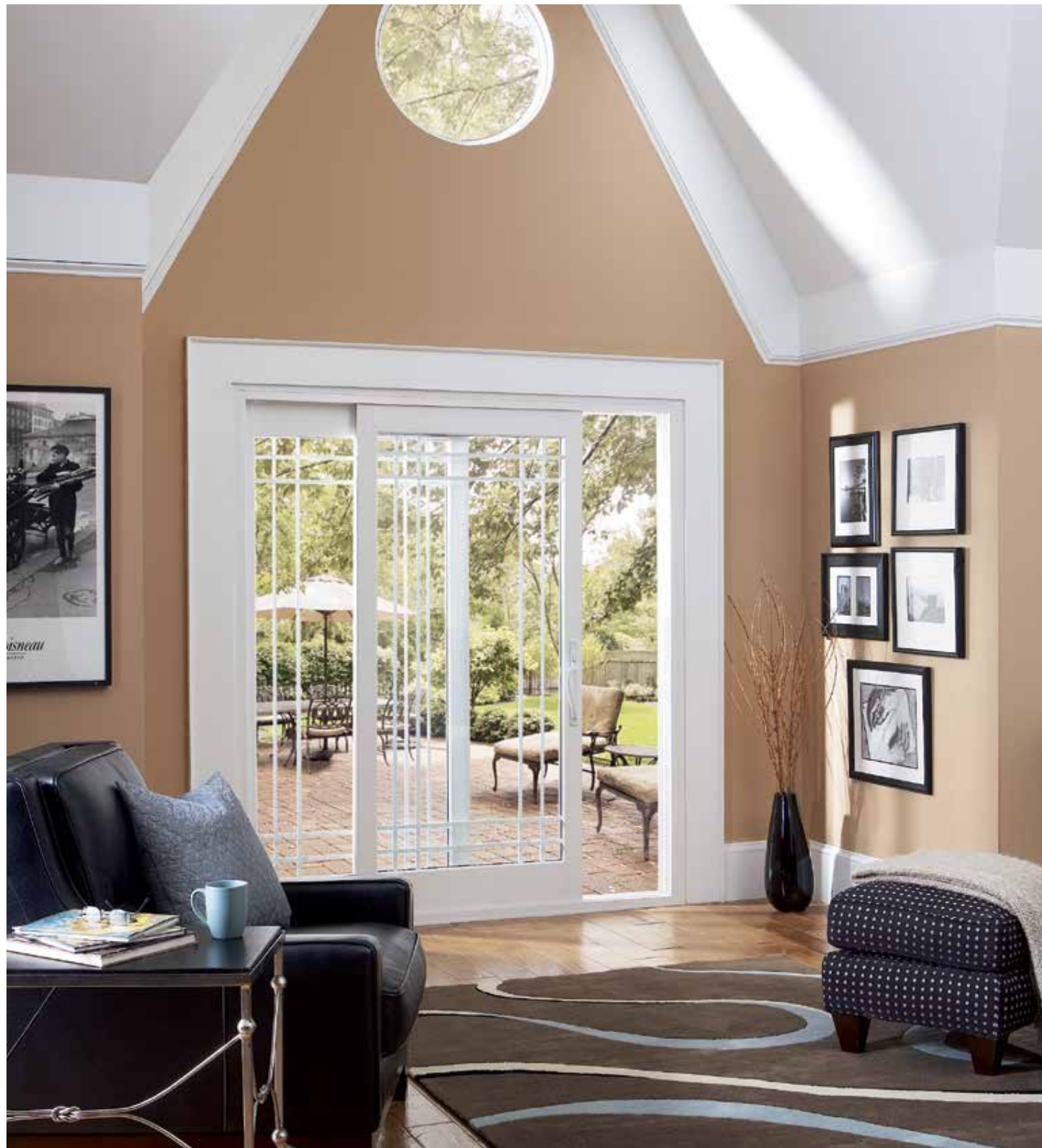
**BarrierXP TG2:** Triple-paned unit with two panes of Low-E glass, two air spaces of argon gas and standard Intercept spacer.



## FRENCH-STYLE SLIDING PATIO DOOR

BEAUTIFULLY CRAFTED WITH  
MORTISED JOINTS

Our French-style patio door has it all – authentic “French door” character and appeal, along with the floor space-saving functionality of a sliding door. Advanced design innovations and a high-performance glass system further distinguish this ultra-premium selection.





## REFINED STYLE, IMPECCABLE QUALITY

There's something about French door elegance that garners special attention. With a 5" top rail, 7" bottom rail and 3" side rails, this superbly crafted door is certain to elevate the beauty of your home while also providing an excellent weather barrier.

- 1 Premium vinyl mainframe and sash extrusions are colored throughout – won't chip, peel, crack or warp and never need to be painted.
- 2 Mainframe and sash feature a double-wall design and multi-chambered construction for outstanding strength and thermal protection.
- 3 Dual internal/external weatherstripping on the sash enhances energy efficiency and performance.
- 4 5" top rail, 7" bottom rail and 3" side rails feature mortised joints for added strength and authentic "French door" charm.
- 5 1" thick insulated glass unit with the Intercept Warm-Edge Spacer System promotes energy conservation year-round.
- 6 Steel reinforcements at the interlocks and lock rails deliver increased strength, rigidity and structural integrity.
- 7 Contoured glazing bead adds visual interest and beauty.
- 8 Precision-engineered tandem roller system ensures quiet and easy operation of the door panel.
- 9 Mainframe joints incorporate closed-cell foam gaskets for superior sealing.

## ADDITIONAL FEATURES

- Sturdy and durable knock down frame for convenient job site installation.
- Deep interlocks with a protective bulb weatherstrip deliver increased insulation and a tight seal.
- Mainframe includes interior and exterior accessory grooves for installation and design versatility.
- Multi-point locking system with strong steel hook design seals the door tightly closed and helps to prevent energy loss.
- Interlock incorporates a built-in, anti-lift feature to impede door panel removal when the door is closed or locked.
- Stainless steel roller track eliminates the possibility of unsightly dark residue and wearing typical of aluminum tracks.
- Heavy-duty extruded aluminum screen features four adjustable rollers for smooth gliding.
- Available in a 2-panel style in 5', 6', 8' and Wisconsin-style widths; 3-panel styles in 9' and 12' widths; and a 4-panel style in a 12' width with center panels that open to each side.
- Choose a White, Beige or Classic Clay door with left or right moving panel – left moving panel is standard (outside looking in); not field reversible.
- Exterior colors and interior woodgrain finish options also are offered.
- Backed by a Lifetime Limited Warranty.†

## SLIDING PATIO DOOR OPTIONS

- ENERGY STAR qualified BarrierXP insulated glass package options.
- Tandem rollers available with stainless steel housing and bearings for harsh environments.
- Interior ventilation foot lock allows convenient yet limited opening of the door for airflow.
- Keyed exterior lock offers convenient access from outside the home.
- Decorative grids or V-grooved cut glass patterns for enhanced beauty.

### French-Style Sliding Patio Door Glass Performance Comparison\*\*

	U-Factor	SHGC
Clear	0.42	0.52
BarrierXP	0.27	0.27
BarrierXP ThermD	0.27	0.27
BarrierXPsc	0.27	0.19
BarrierXP TG2	0.21	0.24

\*\*6400 whole door values.

### Glass Package Terminology

**Clear:** Double-paned clear glass unit.

**BarrierXP:** Double-paned unit with one pane of Low-E glass, argon gas and standard Intercept spacer.

**BarrierXP ThermD:** Double-paned unit with one pane of Low-E glass, argon gas and Stainless Steel Intercept spacer.

**BarrierXPsc:** Double-paned unit with one pane of Low-E SHGC glass, argon gas and standard Intercept spacer.

**BarrierXP TG2:** Triple-paned unit with two panes of Low-E glass, two air spaces of argon gas and standard Intercept spacer.





## DECORATIVE PATIO DOOR OPTIONS

Sanctuary becomes so much more than a patio door when you give it your personal touch. Choose from a variety of frame finishes, handle options, interior grids and decorative glass to create a custom appearance that beautifully reflects your own good taste.

For an added measure of custom-crafted appeal, choose from our Portfolio® Color Collection of high-performance hues. Luxurious exterior colors are achieved with a cutting-edge polyurethane coating technology incorporating heat-reflective pigments to ensure a remarkably strong, fade-resistant and highly weatherable finish that's easy to clean. Our interior woodgrain laminate finishes are precision-engineered for outstanding durability that maintains its attractive appearance over the life of the product. Together, this innovative design collection delivers the perfect fusion of style and strength.



### EXTERIOR PALETTE



Black



Architectural Bronze



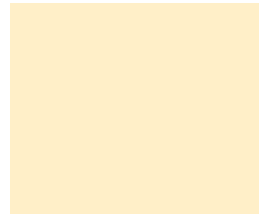
American Terra



Hudson Khaki



Desert Clay



Sand Dune



English Red



Forest Green



Silver



Castle Gray



Classic Clay<sup>1</sup>

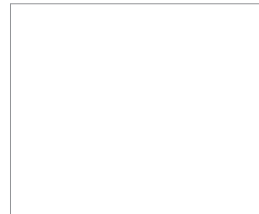


Beige<sup>1</sup>



White<sup>1</sup>

### INTERIOR PALETTE



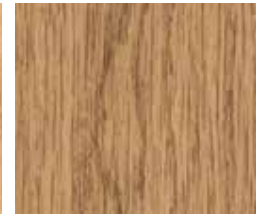
White Woodgrain<sup>2</sup>



Rich Maple Woodgrain



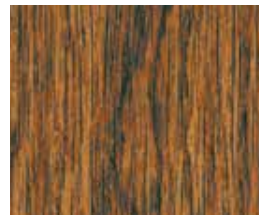
Light Oak Woodgrain



Dark Oak Woodgrain



FoxWood Woodgrain



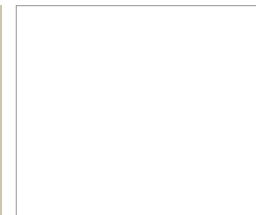
Cherry Woodgrain



Classic Clay<sup>1</sup>



Beige<sup>1</sup>



White<sup>1</sup>

<sup>1</sup>Extruded solid color. Note: Classic Clay is not available with exterior color finishes.

<sup>2</sup>White Woodgrain is available with a Beige or Classic Clay base.

## HANDLE STYLES

Whether it blends in or stands out, a beautifully crafted handle will further enhance the style of your Sanctuary sliding patio door. Classic and Contemporary door handles feature a popular thumb latch design. The French-style door handle is contoured and includes a top lock. Both handles are offered in seven interior finishes; exterior color choices are White, Beige, Classic Clay and Black.

### CLASSIC AND CONTEMPORARY PATIO DOOR HANDLES



White Beige Classic Clay Bright Brass Antique Brass Bright Chrome Brushed Chrome

### FRENCH-STYLE PATIO DOOR HANDLES



White Beige Classic Clay Bright Brass Antique Brass Bright Chrome Brushed Chrome

Exterior handle choices are shown in Contemporary and Classic styles



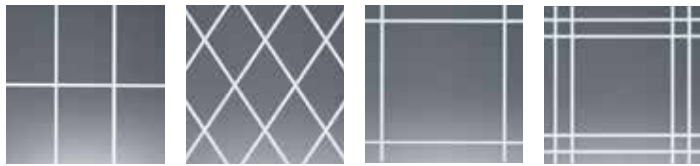
EXTERIOR

White Beige Classic Clay Black

## GRID OPTIONS

Grids are a simple yet stylish way to add personality to your sliding patio door. All grids are enclosed within the insulated glass unit for easy cleaning. First, select your preferred grid pattern and then choose a grid profile to achieve the desired finished look.

### Grid Patterns



Colonial Diamond Prairie Double Prairie

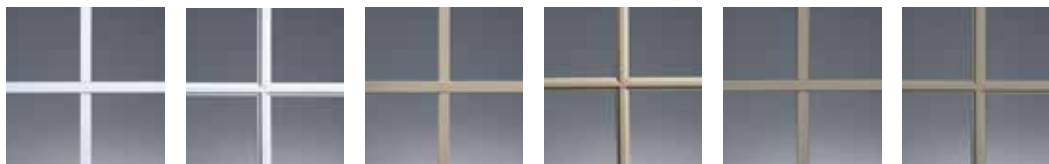
#### Decorative Grid Patterns:

**Colonial** – available in Flat and Contoured grids

**Diamond** – available in Flat grids

**Prairie and Double Prairie** – available in Flat and Contoured grids

### Grid Profiles



Flat White Contoured White Flat Beige Contoured Beige Flat Classic Clay Contoured Classic Clay



Contoured Rich Maple Contoured Light Oak Contoured Dark Oak Contoured FoxWood Contoured Cherry

## V-GROOVED CUT GLASS

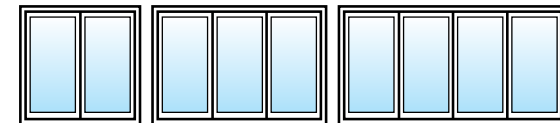
V-grooved cut glass imparts the perfect touch of elegance without obstructing the view. Choose one of our timeless glass patterns to customize your sliding patio door.



Colonial Prairie

## CONFIGURATIONS

Sanctuary sliding patio doors are available in 2-, 3-, and 4-panel configurations.





## A LIFETIME OF PROTECTION

Gentek Sanctuary sliding patio doors carry a lifetime limited warranty – your assurance of lasting performance and genuine value. In addition, Portfolio Color Collection exterior finishes are backed by 10 year fade-resistance warranty coverage. For complete warranty information, including limitations, ask your dealer for a copy of the Gentek warranty.



## WINDOW SOLUTIONS FOR EVERY PROJECT

If your home improvement plans include more than just patio doors, consider Gentek's full selection of premium vinyl windows. Choose from single-hung, double-hung, sliding, casement, awning, bay and bow, garden, picture and special shape windows. Tested and certified to national industry standards, Gentek windows consistently earn high marks for superior quality and performance.



For a complete list of air, water and structural performance results, as well as specific code approvals, visit [www.gentekwindows.net](http://www.gentekwindows.net).

Proudly offered by:

# Window Universe

*www.TheFutureofReplacementWindows.com*



3773 State Road, Cuyahoga Falls, Ohio 44223  
[www.gentekinc.com](http://www.gentekinc.com)

*Make us a part of your home.*



\*Savings vary. See your Gentek Sales Representative for additional information regarding insulated glass package performance. Insulated glass (IG) units that require capillary tubes may experience some argon gas depletion. \*Please see printed warranty for complete details. Colors may be slightly different from their appearance in this brochure. Make final color selections using actual product samples. All specifications and designs subject to change without notice. Due to product changes, improvements and other factors, Gentek reserves the right to change or delete information contained herein without prior notice. WARNING: Screen will not stop child from falling out patio door. Keep child away from open patio door. The only purpose of the screen is to minimize infiltration of insects. Intercept is a registered trademark of Vitro Architectural Glass. ENERGY STAR name and logo are registered U.S. marks and are owned by the U.S. government. USGBC and related logo is a trademark owned by the U.S. Green Building Council.